



# BIKE WHEELS

Made in Italy since 1964

# Dal 1964 realizziamo ruote per bici con l'obiettivo di offrire le migliori performance



Vittorio e Giovanni Bernardi  
Costante Girardengo (al centro). Anni 50



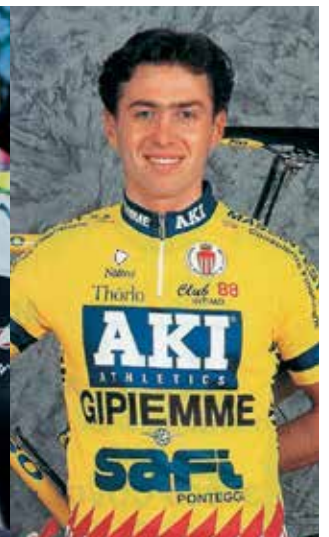
Professional Team 2005/2006 FORNO D'ASOLO



San Marino presentazione Professional Team ALFA LUM. Anni 80



Gianni Bugno  
campione del mondo 1991/1992



Gilberto Simoni



FINAUTO Team 2006



Giovanni Bernardi e Gino Bartali. Anni 50



Cronometro Femminile 2000



Since 1964, we have been producing bicycle wheels with the aim of offering the best performance.



Professional Team FALCON. Anni 70

Giovanni Battaglin

Professional MTB Team OLYMPIA

Giuseppe Petito



Montecarlo 1994 Professional Team AKI - Giapiemme

Nazionale Ukraina, campioni del mondo 1992

Campionati Stayer. Anni 80



Dimitri Konychev

Tullio Campagnolo, Fausto Coppi e Giovanni Bernardi

Giuliano Figueras campione del mondo

Francesco Moser record velocità 1985

## GRAVEL GRX35 CARBON

GRAVEL / CYCLOCROSS

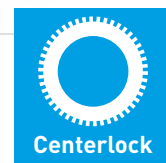
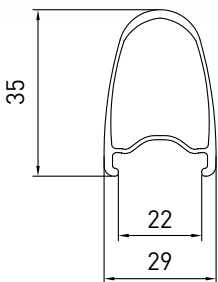
PESO COPPIA  
WEIGHT OF THE SET

1397gr +/-5%

HAND MADE



## PROFILE



CERCHIO RIM	ETRTO	O.L.D.	SISTEMA DI FRENATA BRAKE SYSTEM	VERSIONI VERSIONS	RAGGI SPOKES	NIPPLES	MOZZI HUB	TIPO DI CHIUSURA CLOSING SYSTEM	PESO WEIGHT
Copertoncino/TUBELESS READY Carbonio strutturale H35mm/L29mm	28" 700C / 622 22 din	12x142	Disc Centerlock	Sh. - MS12 - Campa Campa 13 Sram XDR	Nr.24 sfinati piatti Inox Diam.:2/1,5/2mm	Nere	Forgiato nr. 4 cuscinetti ad alta rotazione	Perno passante 12mm	Post. 761 gr +/-5%
Copertoncino/TUBELESS READY Carbonio strutturale H35mm/L29mm	28" 700C / 622 22 din	12x100	Disc Centerlock	-	Nr.24 sfinati piatti Inox Diam.:2/1,5/2mm	Nere	Forgiato su nr. 2 cuscinetti ad alta rotazione	Perno passante 12mm	Ant. 636 gr +/-5%
Clincher/TUBELESS READY Structural carbon fibre H35mm/ L29mm	28" 700C / 622 22 din	12x142	Disc Centerlock	Sh. - MS12 - Campa Campa 13 Sram XDR	Nr.24 Aero double size Stainless steel inox Diam.:2/1,5/2mm	Black	Forged nr. 4 high rotation Sealed Bearings	Through Axle 12mm	Rear 761 gr +/-5%
Clincher/TUBELESS READY Structural carbon fibre H35mm/ L29mm	28" 700C / 622 22 din	12x100	Disc Centerlock	-	Nr.24 Aero double size Stainless steel inox Diam.:2/1,5/2mm	Black	Forged nr. 2 high rotation Sealed Bearings	Through Axle 12mm	Front 636 gr +/-5%



# GPM H40 DISC CARBON TUBELESS READY

ROAD / CHRONO / CYCLOCROSS / TRIATHLON

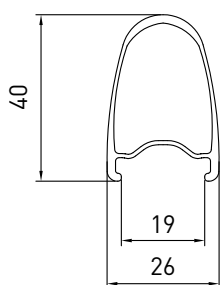
PESO COPPIA  
WEIGHT OF THE SET  
1560gr +/-5%



HAND MADE



## PROFILE



CERCHIO RIM	ETRTD	O.L.D.	SISTEMA DI FRENATA BRAKE SYSTEM	VERSIONI VERSIONS	RAGGI SPOKES	NIPPLES	MOZZI HUB	TIPO DI CHIUSURA CLOSING SYSTEM	PESO WEIGHT
Copertoncino/TUBELESS READY Carbonio strutturale H40mm/L26mm	28" 700C / 622 19 din	12x142	Disc Centerlock	Sh. - Campa Campa 13 Sram XDR	Nr.24 sfinati piatti Inox Diam.:2/1,5/2mm	Nere	Forgiato nr. 4 cuscinetti ad alta rotazione	Perno passante 12mm	Post. 890 gr +/-5%
Copertoncino/ TUBELESS READY Carbonio strutturale H40mm/L26mm	28" 700C / 622 19 din	12x100 15x100	Disc Centerlock	-	Nr.24 sfinati piatti Inox Diam.:2/1,5/2mm	Nere	Forgiato su nr. 2 cuscinetti ad alta rotazione	Perno passante 12mm	Ant.690 gr +/-5%
Clincher/TUBELESS READY Structural carbon fibre H40mm/ L26mm	28" 700C / 622 19 din	12x142	Disc Centerlock	Sh. - Campa Campa 13 Sram XDR	Nr.24 Aero double size Stainless steel inox Diam.:2/1,5/2mm	Black	Forged nr. 4 high rotation Sealed Bearings	Through Axle 12mm	Rear 890 gr +/-5%
Clincher/TUBELESS READY Structural carbon fibre H40mm/ L26mm	28" 700C / 622 19 din	12x100 15x100	Disc Centerlock	-	Nr.24 Aero double size Stainless steel inox Diam.:2/1,5/2mm	Black	Forged nr. 2 high rotation Sealed Bearings	Through Axle 12mm	Front 690 gr +/-5%

# GPM H40 CARBON TUBELESS READY RIM BRAKE

ROAD / CHRONO / CYCLOCROSS / TRIATHLON

## CERTIFICATIONS

Autorizzato U.C.I. - Authorized from U.C.I.  
 Certificato a norme UNI.CE.EN 14781  
 Certified to norm UNI.CE.EN 14781

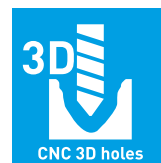
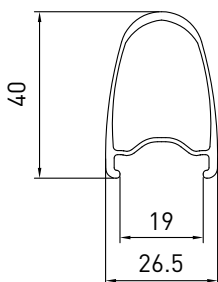
  
**HAND MADE**

**PESO COPPIA**  
**WEIGHT OF THE SET**

1620gr +/-7%



## PROFILE



CERCHIO RIM	ETRTO	O.L.D.	SISTEMA DI FRENATA BRAKE SYSTEM	VERSIONI VERSIONS	RAGGI SPOKES	NIPPLES	MOZZI HUB	TIPO DI CHIUSURA CLOSING SYSTEM	PESO WEIGHT
Copertoncino/ TUBELESS READY Carbonio strutturale H40mm/L26,5mm	28" 700C / 622 19 din	130	Sul cerchio	Sh. - Campa Campa 13 Sram XDR	Nr.24 sfinati piatti Inox Diam.:2/1,5/2mm	Nere	Forgiato nr. 4 Cuscinetti ad alta rotazione	Bloccaggio in alluminio con perno in CrMoLi	Post. 920 gr +/-7%
Copertoncino/ TUBELESS READY Carbonio strutturale H40mm/L26,5mm	28" 700C / 622 19 din	100	Sul cerchio	-	Nr.24 sfinati piatti Inox Diam.:2/1,5/2mm	Nere	Forgiato su nr. 2 cuscinetti ad alta rotazione	Bloccaggio in alluminio con perno in CrMoLi	Ant. 700 gr +/-7%
Clincher/TUBELESS READY Structural carbon fibre H40mm/L26,5mm	28" 700C / 622 19 din	130	On the rims	Sh. - Campa Campa 13 Sram XDR	Nr.24 Aero double size Stainless steel inox Diam.:2/1,5/2mm	Black	Forged nr. 4 high rotation Sealed Bearings	Q.R. alloy with axel in cromoly	Rear 920 gr +/-7%
Clincher/TUBELESS READY Structural carbon fibre H40mm/L26,5mm	28" 700C / 622 19 din	100	On the rims	-	Nr.24 Aero double size Stainless steel inox Diam.:2/1,5/2mm	Black	Forged nr. 2 high rotation Sealed Bearings	Q.R. alloy with axel in cromoly	Front 700 gr +/-7%

# TECNO 1.55 DISC

ROAD / CHRONO / CYCLOCROSS / TRIATHLON / GPM / GRAVEL

## CERTIFICATIONS

Certificato a norme UNI.CE.EN 14781

Certified to norm UNI.CE.EN 14781

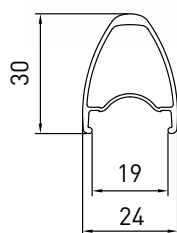
## PESO COPPIA

## WEIGHT OF THE SET

1508gr +/-3%



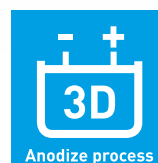
## PROFILE



Ebike



Centerlock



Anodize process



heat treatment

CERCHIO RIM	ETRTO	O.L.D.	SISTEMA DI FRENATA BRAKE SYSTEM	VERSIONI VERSIONS	RAGGI SPOKES	NIPPLES	MOZZI HUB	TIPO DI CHIUSURA CLOSING SYSTEM	PESO WEIGHT
Copertoncino/Tubeless ready. Alluminio 6082 T6 saldato. H30mm/L24mm	28" 700C / 622 19 din	12x142	Disc Centerlock	Sh. Campa SRAM XDR	Inox aero Diam.:2/1,5/2mm Nr.24.	Nere	Forgiato nr. 4 cuscinetti ad alta rotazione	Perno passante 12mm	Post. 796 gr+/-3%
Copertoncino/Tubeless ready. Alluminio 6082 T6 saldato. H30mm/L24mm	28" 700C / 622 19 din	12x100	Disc Centerlock	-	Inox aero Diam.:2/1,5/2mm Nr.24.	Nere	Forgiato su nr. 2 cuscinetti ad alta rotazione	Perno passante 12mm	Ant. 712gr +/-3%
Clincher/Tubeless ready. Alluminium alloy 6082 T6 welded. H30mm/L24mm	28" 700C / 622 19 din	12x142	Disc Centerlock	Sh. Campa SRAM XDR	Inox aero Diam.:2/1,5/2mm, Nr.24	Black	Forged nr. 4 rotation Sealed Bearings	Through Axle 12mm	Rear 796 gr+/-3%
Clincher/Tubeless ready. Alluminium alloy 6082 T6 welded. H30mm/L24mm	28" 700C / 622 19 din	12x100	Disc Centerlock	-	Inox aero Diam.:2/1,5/2mm, Nr.24	Black	Forged nr. 2 rotation Sealed Bearings	Through Axle 12mm	Front 712gr +/-3%

# TECNO 1.55 HARD ANODIZE RIM BRAKE

ROAD / CHRONO / CYCLOCROSS / TRIATHLON / GPM / GRAVEL

## CERTIFICATIONS

Autorizzato U.C.I. - Authorized from U.C.I.

Certificato a norme UNI.CE.EN 14781

Certified to norm UNI.CE.EN 14781

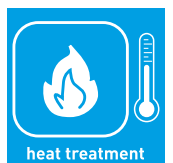
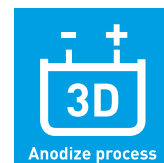
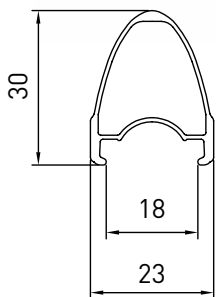
## PESO COPPIA

## WEIGHT OF THE SET

1493 gr +/-3%



## PROFILE



CERCHIO RIM	ETRTO	O.L.D.	SISTEMA DI FRENATA BRAKE SYSTEM	VERSIONI VERSIONS	RAGGI SPOKES	NIPPLES	MOZZI HUB	TIPO DI CHIUSURA CLOSING SYSTEM	PESO WEIGHT
Copertoncino/Tubeless ready. Alluminio 6082 T6 saldato. Anodizzazione dura. H30mm/L23	28" 700C /622 18 din	130	Sul cerchio	Sh. Campa SRAM XDR	Nr.24 sfinati piatti Inox Diam.:2/1,5/2mm	Nere	Forgiato nr. 4 cuscinetti ad alta rotazione	Bloccaggio in alluminio con perno in CrMoLi	Post. 793 gr +/-3%
Copertoncino/Tubeless ready. Alluminio 6082 T6 saldato. Anodizzazione dura. H30mm/L23	28" 700C /622 18 din	100	Sul cerchio	-	Nr.20 sfinati piatti Inox Diam.:2/1,5/2mm	Nere	Forgiato su nr. 2 cuscinetti ad alta rotazione	Bloccaggio in alluminio con perno in CrMoLi	Ant. 700gr +/-3%
Clincher alluminium alloy 6082T welded whit hard anodize. H30mm/L23mm.	28" 700C /622 18 din	130	On the rims	Sh. Campa SRAM XDR	Nr.24 Aero double size Stainless steel inox Diam.:2/1,5/2mm	Black	Forged nr. 4 high rotation Sealed Bearings	Q.R. alloy with axel in cromoly	Rear 793 gr +/-3%
Clincher alluminium alloy 6082T welded whit hard anodize. H30mm/L23mm.	28" 700C /622 18 din	100	On the rims	-	Nr.20 Aero double size Stainless steel inox Diam.:2/1,5/2mm	Black	Forged nr. 2 high rotation Sealed Bearings	Q.R. alloy with axel in cromoly	Front 700gr +/-3%



# GRAVEL X

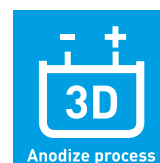
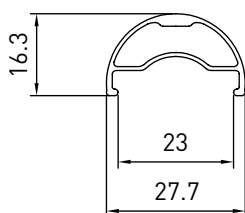
GRAVEL / CYCLOCROSS

**PESO COPPIA**  
**WEIGHT OF THE SET**

1672 gr +/-3%



## PROFILE



CERCHIO RIM	ETRTO	O.L.D.	SISTEMA DI FRENATA BRAKE SYSTEM	VERSIONI VERSIONS	RAGGI SPOKES	NIPPLES	MOZZI HUB	TIPO DI CHIUSURA CLOSING SYSTEM	PESO WEIGHT
Copertoncino/Tubeless ready. Alluminio 6082 T6 saldato. H16.3mm/L27.7	28" 700C / 622 23 din	12 x142	Disc Centerlock	Sh. Campa SRAM XDR	Nr 24 Inox toni Diam.:2mm	Nere	Forgiato nr. 4 cuscinetti ad alta rotazione	Perno passante 12mm	Post. 903 gr +/-3%
Copertoncino/Tubeless ready. Alluminio 6082 T6 saldato. H16.3mm/L27.7	28" 700C / 622 23 din	12 x 100 15 x100	Disc Centerlock	-	Nr 24 Inox toni Diam.:2mm	Nere	Forgiato su nr. 2 cuscinetti ad alta rotazione	Perno passante 12mm	Ant. 769 gr +/-3%
Clincher/Tubeless ready. Alluminio alloy 6082T welded. H16.3mm/L27.7mm	28" 700C / 622 23 din	12 x142	Disc Centerlock	Sh. Campa SRAM XDR	Nr 24 round Inox Diam.:2mm	Black	Forged nr. 4 high rotation Sealed Bearings	Through Axle 12mm	Rear 903 gr +/-3%
Clincher/Tubeless ready. Alluminio alloy 6082T welded. H16.3mm/L27.7mm	28" 700C / 622 23 din	12 x 100 15 x100	Disc Centerlock	-	Nr 24 round Inox Diam.:2mm	Black	Forged nr. 2 high rotation Sealed Bearings	Through Axle 12mm	Front 769 gr +/-3%

# TECNO 716 DISC TUBELESS READY

ROAD / CHRONO / TRIATHLON

## CERTIFICATIONS

Certificato a norme UNI.CE.EN 14781

Certified to norm UNI.CE.EN 14781

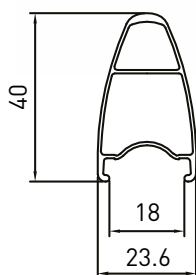
## PESO COPPIA

## WEIGHT OF THE SET

1790gr +/-3%



## PROFILE



Ebike



Centerlock



Anodize process



heat treatment

CERCHIO RIM	ETRTO	O.L.D.	SISTEMA DI FRENATA BRAKE SYSTEM	VERSIONI VERSIONS	RAGGI SPOKES	NIPPLES	MOZZI HUB	TIPO DI CHIUSURA CLOSING SYSTEM	PESO WEIGHT
Copertoncino/Tubeless ready. Alluminio 6082T6 H40mm/L23,6mm	28" 700C /622 18 din	12x142	Disc Centerlock	Sh. Campa SRAM XDR	Nr.24 sfinati piatti Inox Diam.:2/1,5/2mm	Nere	Forgiato nr. 4 cuscinetti ad alta rotazione	Perno passante 12mm	Post. 975 gr +/-3%
Copertoncino/Tubeless ready. Alluminio 6082T6 H40mm/L23,6mm	28" 700C /622 18 din	12x100	Disc Centerlock	-	Nr.24 sfinati piatti Inox Diam.:2/1,5/2mm	Nere	Forgiato su nr. 2 cuscinetti ad alta rotazione	Perno passante 12mm	Ant. 804 gr +/-3%
Clincher/Tubeless ready. Aluminium alloy 6082T6 H40mm/L23,6mm	28" 700C /622 18 din	12x142	Disc Centerlock	Sh. Campa SRAM XDR	Nr.24 Aero double size Stainless steel inox Diam.:2/1,5/2mm	Black	Forged nr. 2 high rotation Sealed Bearings	Through Axle 12mm	Rear 975 gr +/-3%
Clincher/Tubeless ready. Aluminium alloy 6082T6 H40mm/L23,6mm	28" 700C /622 18 din	12x100	Disc Centerlock	-	Nr.24 Aero double size Stainless steel inox Diam.:2/1,5/2mm	Black	Forged nr. 2 high rotation Sealed Bearings	Through Axle 12mm	Front 804 gr +/-3%



# TECNO 716 HARD ANODIZE RIM BRAKE TUBELESS READY

ROAD / CHRONO / TRIATHLON

## CERTIFICATIONS

Autorizzato U.C.I. - Authorized from U.C.I.

Certificato a norme UNI.CE.EN 14781

Certified to norm UNI.CE.EN 14781

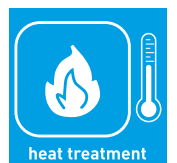
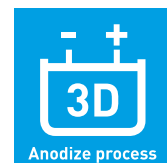
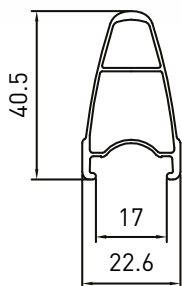
## PESO COPPIA

## WEIGHT OF THE SET

1750 gr +/-3%



## PROFILE



CERCHIO RIM	ETRTO	O.L.D.	SISTEMA DI FRENATA BRAKE SYSTEM	VERSIONI VERSIONS	RAGGI SPOKES	NIPPLES	MOZZI HUB	TIPO DI CHIUSURA CLOSING SYSTEM	PESO WEIGHT
Copertoncino/Tubeless ready. Alluminio 6082T6 H40mm/L22,6mm	28" 700C /622 17 din	130	Sul cerchio	Sh. Campa SRAM XDR	Nr:24 sfinati piatti Inox Diam.:2/1,5/2mm	Nere	Forgiato nr. 4 cuscinetti ad alta rotazione	Bloccaggio in alluminio con perno in CrMoLi	Post. 955 gr +/-3%
Copertoncino/Tubeless ready. Alluminio 6082T6 H40mm/L22,6mm	28" 700C /622 17 din	100	Sul cerchio	-	Nr:20 sfinati piatti Inox Diam.:2/1,5/2mm	Nere	Forgiato su nr. 2 cuscinetti ad alta rotazione	Bloccaggio in alluminio con perno in CrMoLi	Ant. 795 gr +/-3%
Clincher/Tubeless ready. Aluminium alloy 6082T6 H40mm/L22,6mm	28" 700C /622 17 din	130	On the rims	Sh. Campa SRAM XDR	Nr:24 Aero double size Stainless steel inox Diam.:2/1,5/2mm	Black	Forged nr. 4 high rotation Sealed Bearings	Q.R. alloy with axel in cromoly	Rear 955 gr +/-3%
Clincher/Tubeless ready. Aluminium alloy 6082T6 H40mm/L22,6mm	28" 700C /622 17 din	100	On the rims	-	Nr:20 Aero double size Stainless steel inox Diam.:2/1,5/2mm	Black	Forged nr. 2 high rotation Sealed Bearings	Q.R. alloy with axel in cromoly	Front 795 gr +/-3%

## EQUIPE 716 DISC TUBELESS READY

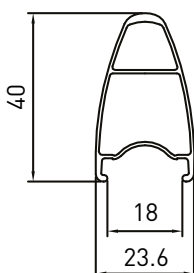
ROAD / CHRONO / TRIATHLON

PESO COPPIA  
WEIGHT OF THE SET

2056 gr +/-3%



## PROFILE



CERCHIO RIM	ETRTO	O.L.D.	SISTEMA DI FRENATA BRAKE SYSTEM	VERSIONI VERSIONS	RAGGI SPOKES	NIPPLES	MOZZI HUB	TIPO DI CHIUSURA CLOSING SYSTEM	PESO WEIGHT
Copertoncino/Tubeless ready. Alluminio 6005T H40mm/L23,6mm	28" 700C /622 18 din	142	Disc Centerlock	Sh. Campa SRAM XDR	Nr.24 acciaio inox tondi Neri Diam.:2mm	Ottone	Forgiato su nr. 4 cuscinetti	Perno passante 12mm	Post. 1066 gr +/-3%
Copertoncino/Tubeless ready. Alluminio 6005T H40mm/L23,6mm	28" 700C /622 18 din	100	Disc Centerlock	-	Nr.24 acciaio inox tondi Neri Diam.:2mm	Ottone	Forgiato su nr. 2 cuscinetti	Perno passante 12mm	Ant. 990 gr +/-3%
Clincher/Tubeless ready. Aluminium alloy 6005T6 H40mm/L23,6mm	28" 700C /622 18 din	142	Disc Centerlock	Sh. Campa SRAM XDR	Nr 24 stainless steel round black Diam.: 2mm	Brass	Forged nr. 4 Sealed Bearings	Through Axle 12mm	Rear 1066 gr +/-3%
Clincher/Tubeless ready. Aluminium alloy 6005T6 H40mm/L23,6mm	28" 700C /622 18 din	100	Disc Centerlock	-	Nr 24 stainless steel round black Diam.: 2mm	Brass	Forged nr. 2 Sealed Bearings	Through Axle 12mm	Front 990 gr +/-3%



# EQUIPE 716 RIM BRAKE TUBELESS READY

ROAD / CHRONO / TRIATHLON

## CERTIFICATIONS

Autorizzato U.C.I. - Authorized from U.C.I.

Certificato a norme UNI.CE.EN 14781

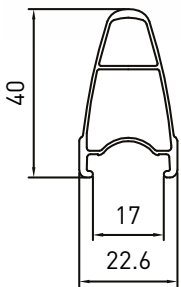
Certified to norm UNI.CE.EN 14781

## PESO COPPIA WEIGHT OF THE SET

1990 gr +/-3%



## PROFILE



CERCHIO RIM	ETRTO	O.L.D.	SISTEMA DI FRENATA BRAKE SYSTEM	VERSIONI VERSIONS	RAGGI SPOKES	NIPPLES	MOZZI HUB	TIPO DI CHIUSURA CLOSING SYSTEM	PESO WEIGHT
Copertoncino/Tubeless ready. Alluminio 6082T6 H40mm/L22,6mm	28" 700C /622 17 din	130	Sul cerchio	Sh./ Sram 10/11 Campa 9-10-11- SRAM XDR	Nr.24 Inox neri tondi Diam.:2mm	Nere	Forgiato su nr. 4 Cuscinetti	Bloccaggio in alluminio con perno in CrMoLi	Post. 1128 gr +/-3%
Copertoncino/Tubeless ready. Alluminio 6082T6 H40mm/L22,6mm	28" 700C /622 17 din	100	Sul cerchio	-	Nr.20 Inox neri tondi Diam.:2mm	Nere	Forgiato su nr. 2 cuscinetti	Bloccaggio in alluminio con perno in CrMoLi	Ant. 920gr +/-3%
Clincher/Tubeless ready. Aluminium alloy 6082T6 H40mm/L22,6mm	28" 700C /622 17 din	130	On the rims	Sh./ Sram 10/11 Campa 9-10-11- SRAM XDR	Nr.24 round black Stainless steel inox Diam.:2mm	Black	Forged nr. 4 sealed Bearings	Q.R. alloy with axel in cromoly	Rear 1128 gr +/-3%
Clincher/Tubeless ready. Aluminium alloy 6082T6 H40mm/L22,6mm	28" 700C /622 17 din	100	On the rims	-	Nr.20 round black Stainless steel inox Diam.:2mm	Black	Forged nr. 2 sealed Bearings	Q.R. alloy with axel in cromoly	Front 920gr +/-3%

## GRAVEL 825 DISC TUBELESS READY

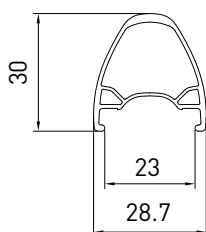
ROAD / GRAVEL

PESO COPPIA  
WEIGHT OF THE SET

2218gr +/-3%



## PROFILE



Centerlock



6 holes disk



Ebike

CERCHIO RIM	ETRTO	O.L.D.	SISTEMA DI FRENATA BRAKE SYSTEM	VERSIONI VERSIONS	RAGGI SPOKES	NIPPLES	MOZZI HUB	TIPO DI CHIUSURA CLOSING SYSTEM	PESO WEIGHT
Copertoncino/Tubeless ready. Alluminio 6060T6 H30mm/L28,7mm	28" 700C /622 23 din	142	Disc Centerlock	Sh. Campa SRAM XDR	Nr.24 acciaio inox tondi Neri Diam.:2mm	Ottone	Forgiato su nr. 4 cuscinetti	Perno passante 12mm	Ant. 1164 gr +/-3%
Copertoncino/Tubeless ready. Alluminio 6060T6 H30mm/L28,7mm	28" 700C /622 23 din	100	Disc Centerlock	-	Nr.24 acciaio inox tondi Neri Diam.:2mm	Ottone	Forgiato su nr. 2 cuscinetti	Perno passante 12mm	Ant. 1054 gr +/-3%
Clincher/Tubeless ready. Aluminium alloy 6005T6 H30mm/L28,7mm	28" 700C /622 23 din	142	Disc Centerlock	Sh. Campa SRAM XDR	Nr 24 stainless steel round black. Diam.: 2mm	Brass	Forged nr. 4 Sealed Bearings	Through Axle 12mm	Rear 1164 gr +/-3%
Clincher/Tubeless ready. Aluminium alloy 6005T6 H30mm/L28,7mm	28" 700C /622 23 din	100	Disc Centerlock	-	Nr 24 stainless steel round black. Diam.: 2mm	Brass	Forged nr. 2 Sealed Bearings	Through Axle 12mm	Front 1054 gr +/-3%



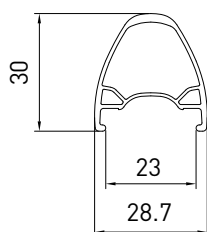
# GRAVEL 825 EQUIPE DISC TUBELESS READY

ROAD / GRAVEL

PESO COPPIA  
WEIGHT OF THE SET  
2372gr +/-3%



## PROFILE



CERCHIO RIM	ETRTO	O.L.D.	SISTEMA DI FRENATA BRAKE SYSTEM	VERSIONI VERSIONS	RAGGI SPOKES	NIPPLES	MOZZI HUB	TIPO DI CHIUSURA CLOSING SYSTEM	PESO WEIGHT
Copertoncino/Tubeless ready. Alluminio 6005T6 H30mm/L28,7mm	28" 700C /622 23 din	142	Disc Centerlock	Sh. Campa SRAM XDR	Nr.32 neri tondi Diam.:2mm	Acciaio	Forgiato su nr. 4 cuscinetti	Perno passante 12mm	Ant. 1241 gr +/-3%
Copertoncino/Tubeless ready. Alluminio 6005T6 H30mm/L28,7mm	28" 700C /622 23 din	100	Disc Centerlock	-	Nr.32 neri tondi Diam.:2mm	Acciaio	Forgiato su nr. 2 cuscinetti	Perno passante 12mm	Ant. 1131 gr +/-3%
Clincher/Tubeless ready. Aluminium alloy 6005T6 H30mm/L28,7mm	28" 700C /622 23 din	142	Disc Centerlock	Sh. Campa SRAM XDR	Nr 32 round black Diam.: 2mm	Steel	Forged nr. 4 Sealed Bearings	Through Axle 12mm	Rear 1241 gr +/-3%
Clincher/Tubeless ready. Aluminium alloy 6005T6 H30mm/L28,7mm	28" 700C /622 23 din	100	Disc Centerlock	-	Nr 32 round black Diam.: 2mm	Steel	Forged nr. 2 Sealed Bearings	Through Axle 12mm	Front 1131 gr +/-3%

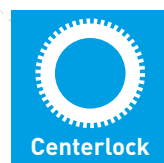
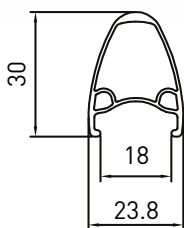
# SHADOW DISC TUBELESS READY

ROAD / TRIATHLON / CYCLOCROSS / GPM / GRAVEL

PESO COPPIA  
WEIGHT OF THE SET  
1969gr +/-3%



## PROFILE



CERCHIO RIM	ETRT0	O.L.D.	SISTEMA DI FRENATA BRAKE SYSTEM	VERSIONI VERSIONS	RAGGI SPOKES	NIPPLES	MOZZI HUB	TIPO DI CHIUSURA CLOSING SYSTEM	PESO WEIGHT
Copertoncino Alluminio 6005T6 H30mm/L24mm	28" 700C /622 18 din	12x142	Disc Centerlock Disco 6 Fori	Sh./ Sram 10/11 Campa 9-10-11-SRAM XDR	Nr.24 Inox neri tondi Diam.:2mm	Ottone	Forgiato nr. 4 Cuscinetti	Perno passante 12mm	Post. 1003 gr +/-3%
Copertoncino Alluminio 6005T6 H30mm/L24mm	28" 700C /622 18 din	12x100	Disc Centerlock Disco 6 Fori	-	Nr.24 Inox neri tondi Diam.:2mm	Ottone	Forgiato su nr. 2 cuscinetti	Perno passante 12mm	Ant. 966 gr +/-3%
Clincher aluminium alloy H30mm/L24mm	28" 700C /622 18 din	12x142	Disc Centerlock 6 holes disk	Sh./ Sram 10/11 Campa 9-10-11-SRAM XDR	Nr.24 round black Stainless steel inox Diam.:2mm	Brass	Forged nr. 4 sealed Bearings	Through Axle 12mm	Rear 1003 gr +/-3%
Clincher aluminium alloy H30mm/L24mm	28" 700C /622 18 din	12x100	Disc Centerlock 6 holes disk	-	Nr.24 round black Stainless steel inox Diam.:2mm	Brass	Forged nr. 2 sealed Bearings	Through Axle 12mm	Front 966 gr +/-3%

# TECNO 024 RIM BRAKE

ROAD

## CERTIFICATIONS

Autorizzato U.C.I. - Authorized from U.C.I.

Certificato a norme UNI.CE.EN 14781

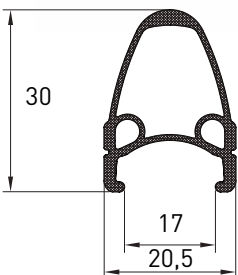
Certified to norm UNI.CE.EN 14781

## PESO COPPIA WEIGHT OF THE SET

1869 gr +/-3%



## PROFILE



CERCHIO RIM	ETRTO	O.L.D.	SISTEMA DI FRENATA BRAKE SYSTEM	VERSIONI VERSIONS	RAGGI SPOKES	NIPPLES	MOZZI HUB	TIPO DI CHIUSURA CLOSING SYSTEM	PESO WEIGHT
Copertoncino Alluminio 6005T6 H30mm/L20.5mm	28" 700C /622 17 din	130	Sul cerchio	Sh./ Sram 10/11 Campa 9-10-11-SRAM XDR	Nr.24 Inox neri tondi Diam.:2mm	Ottone	Forgiato nr. 4 Cuscinetti	Bloccaggio in alluminio con perno in CrMoLi	Post. 1003 gr +/-3%
Copertoncino Alluminio 6005T6 H30mm/L20.5mm	28" 700C /622 17 din	100	Sul cerchio	-	Nr.20 Inox neri tondi Diam.:2mm	Ottone	Forgiato su nr. 2 cuscinetti	Bloccaggio in alluminio con perno in CrMoLi	Ant. 866 gr +/-3%
Clincher aluminium alloy H30mm/L20.5mm	28" 700C /622 17 din	130	On the rims	Sh./ Sram 10/11 Campa 9-10-11-SRAM XDR	Nr.24 round black Stainless steel inox Diam.:2mm	Brass	Forged nr. 4 sealed Bearings	Q.R. alloy with axel in cromoly	Rear 1003 gr +/-3%
Clincher aluminium alloy H30mm/L20.5mm	28" 700C /622 17 din	100	On the rims	-	Nr.24 round black Stainless steel inox Diam.:2mm	Brass	Forged nr. 2 sealed Bearings	Q.R. alloy with axel in cromoly	Front 866 gr +/-3%



# TECNO 324 RIM BRAKE

## ROAD

### CERTIFICATIONS

Autorizzato U.C.I. - Authorized from U.C.I.

Certificato a norme UNI.CE.EN 14781

Certified to norm UNI.CE.EN 14781

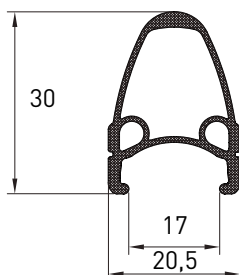
### PESO COPPIA

### WEIGHT OF THE SET

2032 gr +/-3%



## PROFILE



CERCHIO RIM	ETRTO	O.L.D.	SISTEMA DI FRENATA BRAKE SYSTEM	VERSIONI VERSIONS	RAGGI SPOKES	NIPPLES	MOZZI HUB	TIPO DI CHIUSURA CLOSING SYSTEM	PESO WEIGHT
Copertoncino Alluminio H30mm/L20.5mm	28" 700C /622 17 din	130	Sul cerchio	Sh./ Sram 10/11	Nr.24 Inox neri tondi Diam.:2mm	Silver	Forgiato nr. 2 Cuscinetti con perno e cassetta in acciaio	Bloccaggio in alluminio con perno in CrMoLi	Post. 1188 gr +/-3%
Copertoncino Alluminio H30mm/L20.5mm	28" 700C /622 17 din	100	Sul cerchio	-	Nr.20 Inox neri tondi Diam.:2mm	Silver	Forgiato su nr. 2 cuscinetti con perno in acciaio	Bloccaggio in alluminio con perno in CrMoLi	Ant. 844 gr +/-3%
Clincher aluminium alloy H30mm/L20.5mm	28" 700C /622 17 din	130	On the rims	Sh./ Sram 10/11	Nr.24 round black Stainless steel inox Diam.:2mm	Silver	Forged nr. 2 seal Bearings. With steel cassette body and axel	Q.R. alloy with axel in cromoly	Rear 1188 gr +/-3%
Clincher aluminium alloy H30mm/L20.5mm	28" 700C /622 17 din	100	On the rims	-	Nr.24 round black Stainless steel inox Diam.:2mm	Silver	Forged nr. 2 seal Bearings with steel axel	Q.R. alloy with axel in cromoly	Front 844 gr +/-3%





Samuele Angelini - Italian Triathlete - G.S. Fiamme Oro



# PISTA H40 TUBELESS

PISTA – TRACK

PESO COPPIA  
WEIGHT OF THE SET

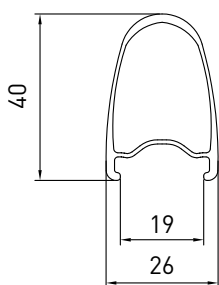
1757 gr +/-5%



HAND MADE



## PROFILE



CERCHIO RIM	ETRTO	O.L.D.	SISTEMA DI FRENATA BRAKE SYSTEM	VERSIONI VERSIONS	RAGGI SPOKES	NIPPLES	MOZZI HUB	TIPO DI CHIUSURA CLOSING SYSTEM	PESO WEIGHT
Tubolare Carbonio strutturale H40mm/L26mm	28" 700C /622 19 din	120	Sul mozzo	Pista per doppio pignone a doppio filetto	Nr.24 Inox neri tondi Diam.:2mm	Ottone	Forgiato su nr. 2 cuscinetti ad alta rotazione	Dado acciaio inox con rondella dentata	Post. 912 gr +/-5%
Tubolare Carbonio strutturale H40mm/L26mm	28" 700C /622 19 din	100	Sul mozzo	-	Nr.24 Inox neri tondi Diam.:2mm	Ottone	Forgiato su nr. 2 cuscinetti ad alta rotazione	Dado acciaio inox con rondella dentata	Ant. 845 gr +/-5%
Tubular structural Carbon Fibre H40mm/L26mm	28" 700C /622 19 din	120	On the hub	Track double sprocket	Nr.24, round black Stainless steel inox Diam.:2mm	Brass	Forged nr. 2 seal Bearings high rotation	Stainless steel Nut with washers	Rear 912 gr +/-5%
Tubular structural Carbon Fibre H40mm/L26mm	28" 700C /622 19 din	100	On the hub	-	Nr.24, round black Stainless steel inox Diam.:2mm	Brass	Forged nr. 2 seal Bearings high rotation	Stainless steel Nut with washers	Front 845gr +/-5%



# PISTA K28

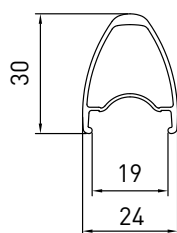
PISTA - TRACK

**PESO COPPIA**  
**WEIGHT OF THE SET**

1885 gr +/-5%



## PROFILE



CERCHIO RIM	ETRTO	O.L.D.	SISTEMA DI FRENATA BRAKE SYSTEM	VERSIONI VERSIONS	RAGGI SPOKES	NIPPLES	MOZZI HUB	TIPO DI CHIUSURA CLOSING SYSTEM	PESO WEIGHT
Copertoncino/Tubeless ready. Alluminio 6082 T6 saldato. H30mm/L24mm	28" 700C /622 18 din	120	Sul mozzo	Pista per doppio pignone a doppio filetto	Nr.20 Inox neri tondi Diam.:2mm	Ottone	Forgiato su nr. 2 cuscinetti ad alta rotazione	Dado acciaio inox con rondella dentata	Post. 972 gr +/-3%
Copertoncino/Tubeless ready. Alluminio 6082 T6 saldato. H30mm/L24mm	28" 700C /622 18 din	100	Sul mozzo	-	Nr.20 Inox neri tondi Diam.:2mm	Ottone	Forgiato su nr. 2 cuscinetti ad alta rotazione	Dado acciaio inox con rondella dentata	Ant. 913 gr +/-3%
Clincher/Tubeless ready. Alluminium alloy 6082 T6 welded. H30mm/L24mm	28" 700C /622 18 din	120	On the hub	Track double sprocket	Nr.20, round black Stainless steel inox Diam.:2mm	Brass	Forged nr. 2 seal Bearings high rotation	Stainless steel Nut with washers	Rear 972 gr +/-3%
Clincher/Tubeless ready. Alluminium alloy 6082 T6 welded. H30mm/L24mm	28" 700C /622 18 din	100	On the hub	-	Nr.20, round black Stainless steel inox Diam.:2mm	Brass	Forged nr. 2 seal Bearings high rotation	Stainless steel Nut with washers	Front 913gr +/-3%

## PISTA A40 RIM BRAKE

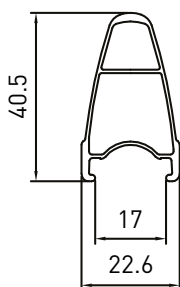
ROAD / TRACK

PESO COPPIA  
WEIGHT OF THE SET

2530 gr +/-3%



## PROFILE



CERCHIO RIM	ETRTO	O.L.D.	SISTEMA DI FRENATA BRAKE SYSTEM	VERSIONI VERSIONS	RAGGI SPOKES	NIPPLES	MOZZI HUB	TIPO DI CHIUSURA CLOSING SYSTEM	PESO WEIGHT
Copertoncino/Tubeless ready. Alluminio 6082 T6 saldato. H40mm/L22,6	28" 700C /622 17 din	120	Sul cerchio	Pista per doppio pignone a doppio filetto	Nr.36 neri tondi Diam.:2mm	standard	Forgiato su nr. 2 cuscinetti	Dado cromato	Post. 1290 gr +/-3%
Copertoncino/Tubeless ready. Alluminio 6082 T6 saldato. H40mm/L22,6	28" 700C /622 17 din	100	Sul cerchio	-	Nr.36 neri tondi Diam.:2mm	standard	Forgiato su nr. 2 cuscinetti	Dado cromato	Ant.1240gr +/-3%
Clincher /Tubeless ready. Alluminio alloy 6082T welded. H40mm/L22,6mm.	28" 700C /622 17 din	120	On the rims	Track double sprocket	Nr.36 round black Diam.:2mm	standard	Forged nr. 2 sealed Bearings	Chrome Nut	Rear 1290 gr +/-3%
Clincher /Tubeless ready. Alluminio alloy 6082T welded. H40mm/L22,6mm.	28" 700C /622 17 din	100	On the rims	-	Nr.36 round black Diam.:2mm	standard	Forged nr. 2 sealed Bearings	Chrome Nut	Front 1240 gr +/-3%

# PISTA FIXED RIM BRAKE

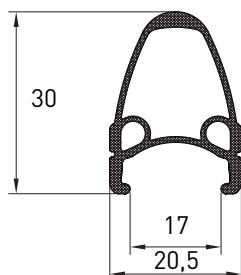
ROAD / TRACK

PESO COPPIA  
WEIGHT OF THE SET

2248 gr +/-3%



## PROFILE



CERCHIO RIM	ETRTO	O.L.D.	SISTEMA DI FRENATA BRAKE SYSTEM	VERSIONI VERSIONS	RAGGI SPOKES	NIPPLES	MOZZI HUB	TIPO DI CHIUSURA CLOSING SYSTEM	PESO WEIGHT
Copertoncino Alluminio 6005 T6 H30mm/L20.5	28" 700C /622 17 din	120	Sul cerchio	Pista per doppio pignone a doppio filetto	Nr.36 neri tondi Diam.:2mm	standard	Forgiato su nr. 2 cuscinetti	Dado cromato	Post. 1290 gr +/-3%
Copertoncino Alluminio 6005 T6 H30mm/L20.5	28" 700C /622 17 din	100	Sul cerchio	-	Nr.36 neri tondi Diam.:2mm	standard	Forgiato su nr. 2 cuscinetti	Dado cromato	Ant.1240gr +/-3%
Clincher: Alluminio alloy 6005T6, H30mm/L20.5mm.	28" 700C /622 17 din	120	On the rims	Track double sprocket	Nr.36 round black Diam.:2mm	standard	Forged nr. 2 sealed Bearings	Chrome Nut	Rear 1290 gr +/-3%
Clincher: Alluminio alloy 6005T6, H30mm/L20.5mm.	28" 700C /622 17 din	100	On the rims	-	Nr.36 round black Diam.:2mm	standard	Forged nr. 2 sealed Bearings	Chrome Nut	Front 1240 gr +/-3%



## 819 29" TUBELESS READY

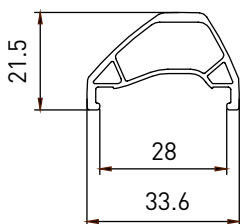
XC / XM / MARATHON / X-TERRA / XTRAIL / ENDURO / EBIKE

PESO COPPIA  
WEIGHT OF THE SET

2226 gr +/-3%



## PROFILE



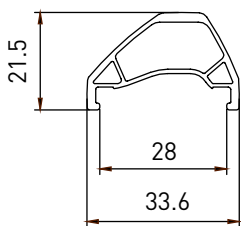
CERCHIO RIM	ETRTO	O.L.D.	SISTEMA DI FRENATA BRAKE SYSTEM	VERSIONI VERSIONS	RAGGI SPOKES	NIPPLES	MOZZI HUB	TIPO DI CHIUSURA CLOSING SYSTEM	PESO WEIGHT
Copertoncino/Tubeless ready. Alluminio 6005 T6. H21.5mm/L33.6mm	29" plus 622 - 28 din	12x148 Boost	DISCO	Sh./ Sram HG10/11 - SRAM XD Microsplaine	Nr:32 Inox tondo Diam.:2mm	Ottone	Nr. 4 Cuscinetti ad alta rotazione	Perno passante 12mm	Post. 1231 gr +/-3%
Copertoncino/Tubeless ready. Alluminio 6005 T6. H21.5mm/L33.6mm	29" plus 622 - 28 din	15x110 Boost	DISCO	-	Nr:32 Inox tondo Diam.:2mm	Ottone	Forgiato su nr. 2 cuscinetti ad alta rotazione	Perno passante 15mm	Ant. 995 gr +/-3%
Clincher/Tubeless ready. Alluminium alloy 6005T6, H21.5mm/L33.6mm.	29" plus 622 - 28 din	12x148 Boost	DISC	Sh./ Sram HG10/11 - SRAM XD Microsplaine	Nr:32 Inox tondo Diam.:2mm	Brass	Nr. 4 high rotation Sealed Bearings	Through Axle 12mm	Rear 1231 gr +/-3%
Clincher/Tubeless ready. Alluminium alloy 6005T6, H21.5mm/L33.6mm.	29" plus 622 - 28 din	15x110 Boost	DISC	-	Nr:32 Inox tondo Diam.:2mm	Brass	Forged nr. 2 high rotation Sealed Bearings	Through Axle 15mm	Front 995 gr +/-3%

**819 MULET 27" 29" TUBELESS READY**

XTRAIL / ENDURO / EBIKE / FREESTYLE / DH

**PESO COPPIA  
WEIGHT OF THE SET**

2556 gr +/-3%

**PROFILE**

CERCHIO RIM	ETRTO	O.L.D.	SISTEMA DI FRENATA BRAKE SYSTEM	VERSIONI VERSIONS	RAGGI SPOKES	NIPPLES	MOZZI HUB	TIPO DI CHIUSURA CLOSING SYSTEM	PESO WEIGHT
Copertoncino/Tubeless ready Alluminio 6005T6 H21.5mm/L33.6mm	27,5" 584 28 din	12x148 Boost	DISCO	Sh./Sram HG10/11 - SRAM XD Microspline	Nr.32 Inox Diam.:2mm	Ottone	Forgiato nr. 4 Cuscinetti	Perno passante 12mm	Post. 1396 gr +/-3%
Copertoncino/Tubeless ready Alluminio 6005T6 H21.5mm/L33.6mm	29" 622 28 din	15x110 Boost	DISCO	-	Nr.32 Inox Diam.:2mm	Ottone	Forgiato nr. 2 Cuscinetti	Perno passante 15mm	Ant. 1160 gr +/-3%
Clincher Tubeless ready Alloy 6005T6 H21.5mm/L33.6mm	27,5" 584 28 din	12x148 Boost	DISC	Sh./Sram HG10/11 - SRAM XD Microspline	Nr.32 Stainless steel inox Diam.:2mm	Brass	Forged nr. 4 sealed Bearings	Thru axel 12mm	Rear. 1396 gr +/-3%
Clincher Tubeless ready Alloy 6005T6 H21.5mm/L33.6mm	29" 622 28 din	15x110 Boost	DISC	-	Nr.32 Stainless steel inox Diam.:2mm	Brass	Forged nr. 2 sealed Bearings	Thru axel 15mm	Front. 1160 gr +/-3%

# N33 PLUS 27,5" TUBELESS READY

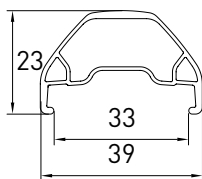
XTRAIL / ENDURO / EBIKE / FREESTYLE / DH

PESO COPPIA  
WEIGHT OF THE SET

2090 gr +/-3%



## PROFILE



CERCHIO RIM	ETRTO	O.L.D.	SISTEMA DI FRENATA BRAKE SYSTEM	VERSIONI VERSIONS	RAGGI SPOKES	NIPPLES	MOZZI HUB	TIPO DI CHIUSURA CLOSING SYSTEM	PESO WEIGHT
Copertoncino/Tubeless ready. Alluminio 6005 T6. H23mm/L39mm	27,5" plus 584 - 33 din	12x148 Boost	DISCO	Sh./Sram 10/11 - SRAM XD	Nr.32 Inox Diam.:2mm	Ottone	Nr. 4 Cuscinetti ad alta rotazione	Perno passante 12mm	Post. 1060 gr +/-3%
Copertoncino/Tubeless ready. Alluminio 6005 T6. H23mm/L39mm	27,5" plus 584 - 33 din	15x110 Boost	DISCO	-	Nr.32 Inox Diam.:2mm	Ottone	Forgiato su nr. 2 cuscinetti ad alta rotazione	Perno passante 15mm	Ant. 1030 gr +/-3%
Clincher/Tubeless ready. Alluminium alloy 6005T6. H23mm/L39mm.	27,5" plus 584 - 33 din	12x148 Boost	DISC	Sh./Sram 10/11 - SRAM XD	Nr.32 Inox aero Diam.:2mm	Brass	Nr. 4 high rotation Sealed Bearings	Thru axel 12mm	Rear 1060 gr +/-3%
Clincher/Tubeless ready. Alluminium alloy 6005T6. H23mm/L39mm.	27,5" plus 584 - 33 din	15x110 Boost	DISC	-	Nr.32 Inox aero Diam.:2mm	Brass	Forged nr. 2 high rotation Sealed Bearings	Thru axel 15mm	Front 1030 gr +/-3%

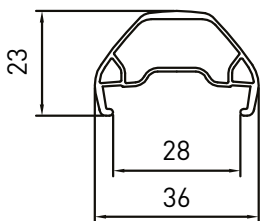


**N28 29" TUBELESS READY**

XTRAIL / ENDURO / EBIKE / FREESTYLE / DH

**PESO COPPIA  
WEIGHT OF THE SET**

2090 gr +/-3%

**PROFILE**

CERCHIO RIM	ETRTO	O.L.D.	SISTEMA DI FRENATA BRAKE SYSTEM	VERSIONI VERSIONS	RAGGI SPOKES	NIPPLES	MOZZI HUB	TIPO DI CHIUSURA CLOSING SYSTEM	PESO WEIGHT
Copertoncino/Tubeless ready. Alluminio 6005 T6. H23mm/L36mm	29" plus 622 - 28 din	12x148 Boost	DISCO	Sh./Sram HG10/11 - SRAM XD Microsplines	Nr.32 Inox aero Diam.:2mm	Ottone	Nr. 4 Cuscinetti ad alta rotazione	Perno passante 12mm	Post. 1060 gr +/-3%
Copertoncino/Tubeless ready. Alluminio 6005 T6. H23mm/L36mm	29" plus 622 - 28 din	15x110 Boost	DISCO	-	Nr.32 Inox aero Diam.:2mm	Ottone	Forgiato su nr. 2 cuscinetti ad alta rotazione	Perno passante 15mm	Ant. 1030 gr +/-3%
Clincher/Tubeless ready. Alluminium alloy 6005T6. H23mm/L36mm.	29" plus 622 - 28 din	12x148 Boost	DISC	Sh./Sram HG10/11 - SRAM XD Microsplines	Nr.32 Inox aero Diam.:2mm	Brass	Nr. 4 high rotation Sealed Bearings	Through Axle 12mm	Rear 1060 gr +/-3%
Clincher/Tubeless ready. Alluminium alloy 6005T6. H23mm/L36mm.	29" plus 622 - 28 din	15x110 Boost	DISC	-	Nr.32 Inox aero Diam.:2mm	Brass	Forged nr. 2 high rotation Sealed Bearings	Through Axle 15mm	Front 1030 gr +/-3%

**N25 SLE DISC BOOST 27,5" - 29" TUBELESS READY**

XC / XM / MARATHON / X-TERRA / XTRAIL / ENDURO / EBIKE

FREESTYLE / DH / GRAVEL

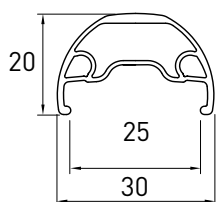
PESO COPPIA

WEIGHT

OF THE SET

27,5" 2166 gr +/-3%

29" 2260 gr +/-3%

**PROFILE**

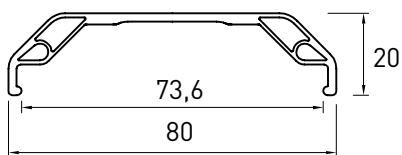
CERCHIO RIM	ETRTO	O.L.D.	SISTEMA DI FRENATA BRAKE SYSTEM	VERSIONI VERSIONS	RAGGI SPOKES	NIPPLES	MOZZI HUB	TIPO DI CHIUSURA CLOSING SYSTEM	PESO WEIGHT
Copertoncino/Tubeless ready Alluminio 6005T6 H20mm/L30 mm	29" 622 27,5" 584 25 din	12x148 Boost	DISCO	Sh 10/11 - Sram 10/11 -xd 11/12	Nr.32 Inox Diam.:2mm	Ottone	Forgiato nr. 4 Cuscinetti	Perno passante 12mm	27,5" Post. 1216 gr 29" Post. 1280 gr +/-3%
Copertoncino/Tubeless ready Alluminio 6005T6 H20mm/L30 mm	29" 622 27,5" 584 25 din	15x110 Boost	DISCO	-	Nr.32 Inox Diam.:2mm	Ottone	Forgiato nr. 2 Cuscinetti	Perno passante 15mm	27,5" Ant. 950 gr 29" Ant. 980 gr +/-3%
Clincher Tubeless ready Alloy 6005T6 H20mm/L30 mm	29" 622 27,5" 584 25 din	12x148 Boost	DISC	Sh 10/11 - Sram 10/11 -xd 11/12	Nr.32 Stainless steel inox Diam.:2mm	Brass	Forged nr. 4 sealed Bearings	Thru axel 12mm	27,5" Rear. 1216 gr 29" Rear. 1280 gr +/-3%
Clincher Tubeless ready Alloy 6005T6 H20mm/L30 mm	29" 622 27,5" 584 25 din	15x110 Boost	DISC	-	Nr.32 Stainless steel inox Diam.:2mm	Brass	Forged nr. 2 sealed Bearings	Thru axel 15mm	27,5" Front. 950 gr 29" Front. 980 gr +/-3%

**FAT MAGNUS 80 26"**

XC / XM / MARATHON / TRAIL

**PESO COPPIA  
WEIGHT OF THE SET**

3021 gr +/-3%

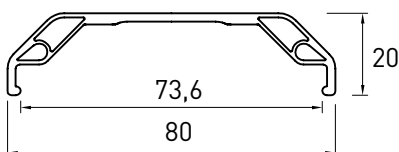
**PROFILE**

CERCHIO RIM	ETRTD	O.L.D.	SISTEMA DI FRENATA BRAKE SYSTEM	VERSIONI VERSIONS	RAGGI SPOKES	NIPPLES	MOZZI HUB	TIPO DI CHIUSURA CLOSING SYSTEM	PESO WEIGHT
Copertoncino/ Alluminio H20mm/L80mm	26"559 74 din	12x197	DISCO	Sh HG 10/11 - Sram HG 10/11	Nr.32 Inox Diam.:2mm	Ottone silver	Forgiato nr. 5 Cuscinetti	Perno passante 12mm	Post. 1577 gr +/-3%
Copertoncino/ Alluminio H20mm/L80mm	26"559 74 din	15x150	DISCO	-	Nr.32 Inox Diam.:2mm	Ottone silver	Forgiato su nr. 2 cuscinetti	Perno passante 15mm	Ant. 1444 gr +/-3%
Clincher aluminium H20mm/L80mm	26"559 74 din	12x197	DISC	Sh HG 10/11 - Sram HG 10/11	Nr.32 Stainless steel inox Diam.:2mm	Silver Brass	Forged nr. 5 sealed Bearings	Thru axel 12mm	Rear.1577 gr +/-3%
Clincher aluminium H20mm/L80mm	26"559 74 din	15x150	DISC	-	Nr.32 Stainless steel inox Diam.:2mm	Silver Brass	Forged nr. 2 sealed Bearings	Thru axel 15mm	Front.1444 gr +/-3%



**FAT MAGNUS 80 20"**

E-BIKE / S-PEDELEC

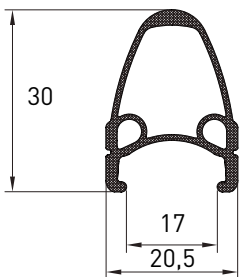
**PESO COPPIA  
WEIGHT OF THE SET**Certificazione ebike / Certification ebike  
MTB EN 15194 (4.3.9.1) - ISO 4210-7 (4.1)Certificazione S-Pedelec / Certification S-Pedelec  
EN 15194 (4.3.9.1) - ISO 4210-7 (4.1) 4171**PROFILE****Ebike****6 holes disk**

CERCHIO RIM	ETRTO	O.L.D.	SISTEMA DI FRENATA BRAKE SYSTEM	VERSIONI VERSIONS	RAGGI SPOKES	NIPPLES	MOZZI HUB	TIPO DI CHIUSURA CLOSING SYSTEM	PESO WEIGHT
Copertoncino Alluminio 6060T6 H20mm/L80mm	20° 406 73,5 din	170	DISCO	Filetto ruota libera Opz Shim.	Nr. 36 acciaio inox tondi Neri Diam.:2mm	Ottone	Forgiato su nr. 2 cuscinetti	Dado	-
Copertoncino Alluminio 6060T6 H20mm/L80mm	20° 406 73,5 din	135	DISCO	-	Nr. 36 acciaio inox tondi Neri Diam.:2mm	Ottone	Forgiato su nr. 2 cuscinetti	Dado	-
Clincher aluminium alloy 6060T6 H20mm/L80mm	20° 406 73,5 din	170	DISC	Freewheels Opz. Shim.	Nr. 36 stainless steel round black Diam.: 2mm	Brass	Forged nr. 2 Sealed Bearings	Nut	-
Clincher aluminium alloy 6060T6 H20mm/L80mm	20° 406 73,5 din	135	DISC	-	Nr. 36 stainless steel round black Diam.: 2mm	Brass	Forged nr. 2 Sealed Bearings	Nut	-

## T1-30S



## PROFILE

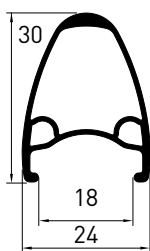


CERCHIO RIM	ETRTO	O.L.D.	SISTEMA DI FRENATA BRAKE SYSTEM	VERSIONI VERSIONS	RAGGI SPOKES	NIPPLES	MOZZI HUB	TIPO DI CHIUSURA CLOSING SYSTEM
Copertoncino. Alluminio 6005 T6. H30mm/L20.5	28" 700C / 622 17 din	130	Sul cerchio	Sh./ Sram 10/11 Campa 9-10-11 Filetto	STANDARD Nr.32 Diam.:2mm	Acciaio	Su sfere	Bloccaggio in alluminio con perno in CrMoLi
Copertoncino. Alluminio 6005 T6. H30mm/L20.5	28" 700C / 622 17 din	100	Sul cerchio	-	STANDARD Nr.32 Diam.:2mm	Acciaio	Su sfere	Bloccaggio in alluminio con perno in CrMoLi
Clincher. Alluminium alloy 6005T6, H30mm/L20.5mm.	28" 700C / 622 17 din	130	On the rims	Sh./ Sram 10/11 Campa 9-10-11 Freewheels	STANDARD Nr.32 Diam.:2mm	Steel	On loseball	Q.R. alloy with axel in cromoly
Clincher. Alluminium alloy 6005T6, H30mm/L20.5mm.	28" 700C / 622 17 din	100	On the rims	-	STANDARD Nr.32 Diam.:2mm	Steel	On loseball	Q.R. alloy with axel in cromoly

## T1-30S DISC



## PROFILE



DISC



6 holes disk

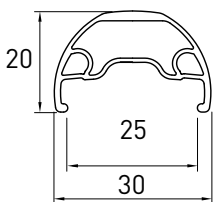
CERCHIO RIM	ETRTO	O.L.D.	SISTEMA DI FRENATA BRAKE SYSTEM	VERSIONI VERSIONS	RAGGI SPOKES	NIPPLES	MOZZI HUB	TIPO DI CHIUSURA CLOSING SYSTEM
Copertoncino. Alluminio 6005 T6. H30mm/L24	28" 700C / 622 18 din	135	Disc	Sh./ Sram 10/11 Filetto	STANDARD Nr.32 Diam.:2mm	Acciaio	Su sfere	Bloccaggio in alluminio con perno in CrMoLi
Copertoncino. Alluminio 6005 T6. H30mm/L24	28" 700C / 622 18 din	100	Disc	-	STANDARD Nr.32 Diam.:2mm	Acciaio	Su sfere	Bloccaggio in alluminio con perno in CrMoLi
Clincher. Alluminium alloy 6005T6, H30mm/L24mm	28" 700C / 622 18 din	135	Disc	Sh./ Sram 10/11 Freewheels	STANDARD Nr.32 Diam.:2mm	Steel	On loseball	Q.R. alloy with axel in cromoly
Clincher. Alluminium alloy 6005T6, H30mm/L24mm	28" 700C / 622 18 din	100	Disc	-	STANDARD Nr.32 Diam.:2mm	Steel	On loseball	Q.R. alloy with axel in cromoly



## EQUIPE ROCCIA 26" - 27,5" - 28" - 29"



## PROFILE

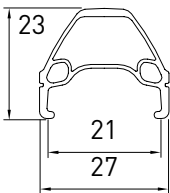


CERCHIO RIM	ETRTO	O.L.D.	SISTEMA DI FRENATA BRAKE SYSTEM	VERSIONI VERSIONS	RAGGI SPOKES	NIPPLES	MOZZI HUB	TIPO DI CHIUSURA CLOSING SYSTEM
Copertoncino/Tubeless ready. Alluminio. H20mm /L30mm	28"/29" 622 27,5" 584 25 din	135	Disc	Sh./ Sram 10/11 filetto	Standard neri tondi Diam.:2mm	Acciaio	Forgiato nr. 2 Cuscinetti con perno e cassetta in acciaio	Bloccaggio in alluminio con perno in CrMoLi
Copertoncino/Tubeless ready. Alluminio. H20mm /L30mm	28"/29" 622 27,5" 584 25 din	100	Disc	-	Standard neri tondi Diam.:2mm	Acciaio	Forgiato su nr. 2 cuscinetti con perno in acciaio	Bloccaggio in alluminio con perno in CrMoLi
Clincher/Tubeless ready. Aluminium alloy. H20mm/L30mm	28"/29" 622 27,5" 584 25 din	135	Disc	Sh./ Sram 10/11 freewheels	Standard round black Diam.:2mm	Steel	Forged nr. 2 sealed Bearings. With steel cassette body and axel	Q.R. alloy with axel in cromoly
Clincher/Tubeless ready. Aluminium alloy. H20mm/L30mm	28"/29" 622 27,5" 584 25 din	100	Disc	-	Standard round black Diam.:2mm	Steel	Forged nr. 2 sealed Bearings with steel axel	Q.R. alloy with axel in cromoly

## T1-24L 28" - 29" RIM BRAKE



## PROFILE

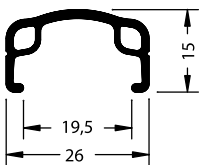


CERCHIO RIM	ETRTO	O.L.D.	SISTEMA DI FRENATA BRAKE SYSTEM	VERSIONI VERSIONS	RAGGI SPOKES	NIPPLES	MOZZI HUB	TIPO DI CHIUSURA CLOSING SYSTEM
Copertoncino Alluminio H23mm /L27mm	28"/29" 622 21 din	135	Sul cerchio	Sh./ Sram 9/10/11	Standard neri tondi Diam.:2mm	Acciaio	Forgiato su Sfere	Bloccaggio in alluminio con perno in CrMoLi
Copertoncino Alluminio H23mm /L27mm	28"/29" 622 21 din	100	Sul cerchio	-	Standard neri tondi Diam.:2mm	Acciaio	Forgiato su Sfere	Bloccaggio in alluminio con perno in CrMoLi
Clincher aluminium alloy H23mm /L27mm	28"/29" 622 21 din	135	On the rims	Sh./ Sram 9/10/11	Standard round black Diam.:2mm	Steel	Forged loseball	Q.R. alloy with axel in cromoly
Clincher aluminium alloy H23mm /L27mm	28"/29" 622 21 din	100	On the rims	-	Standard round black Diam.:2mm	Steel	Forged loseball	Q.R. alloy with axel in cromoly

## MIRAGE 16" - 20" - 24" - 26" - 26"1/8 - 28"



## PROFILE

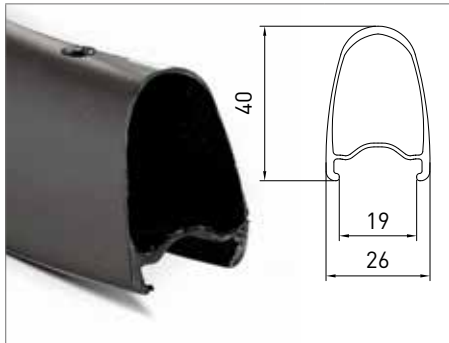


CERCHIO RIM	ETRTO	O.L.D.	SISTEMA DI FRENATA BRAKE SYSTEM	VERSIONI VERSIONS	RAGGI SPOKES	NIPPLES	MOZZI HUB	TIPO DI CHIUSURA CLOSING SYSTEM
Copertoncino Alluminio 6060T6 H15mm / L26mm	16" 305 - 20" 406 24" 507 - 26" 559 26" 13/8 590 28" e 29" 622 19 din	135	V-Brake opz. Disc 6 fori	Filetto ruota libera	Nr. 36 tondi Diam.: 2mm	Acciaio	Acciaio	Dado
Copertoncino Alluminio 6060T6 H15mm / L26mm	16" 305 - 20" 406 24" 507 - 26" 559 26" 13/8 590 28" e 29" 622 19 din	100	V-Brake opz. Disc 6 fori	-	Nr. 36 tondi Diam.: 2mm	Acciaio	Acciaio	Dado
Clincher aluminium alloy 6060T6 H15mm / L26mm	16" 305 - 20" 406 24" 507 - 26" 559 26" 13/8 590 28" e 29" 622 19 din	135	V-Brake opz. Disc 6 hole	Freewheels	Nr. 36 steel round Diam.: 2mm	Steel	Steel	Nut
Clincher aluminium alloy 6060T6 H15mm / L26mm	16" 305 - 20" 406 24" 507 - 26" 559 26" 13/8 590 28" e 29" 622 19 din	100	V-Brake opz. Disc 6 hole	-	Nr. 36 steel round Diam.: 2mm	Steel	Steel	Nut



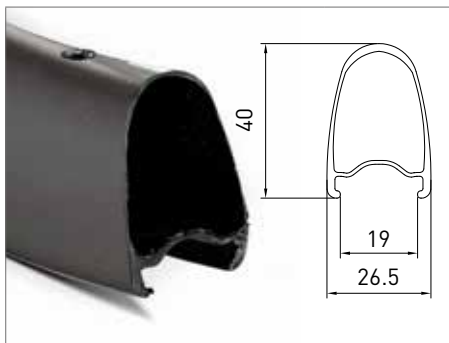
# CERCHI / RIMS

## FIBRA CARBONIO / CARBON FIBER



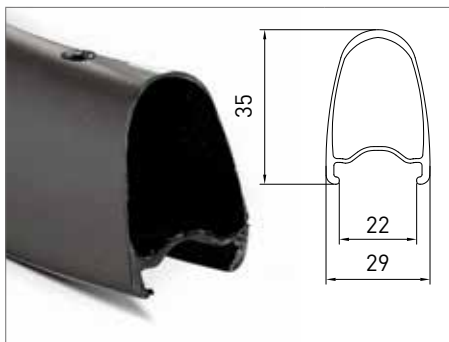
### H40 TUBELESS READY DISC

Copertoncino / Clincher  
 Misure - Etrto mm / Size - Etrto mm: 28" - 622 - Din 19  
 ERD mm 28": 546  
 Altezz. / Height: 40  
 Larghezza / Width: 26  
 Materiale / Material:  
 100% Fibra Carbonio / 100% Carbon Fiber  
 Forature / Holes: 24  
 Peso / Weight: 430gr



### H40 TUBELESS READY V-BRAKE

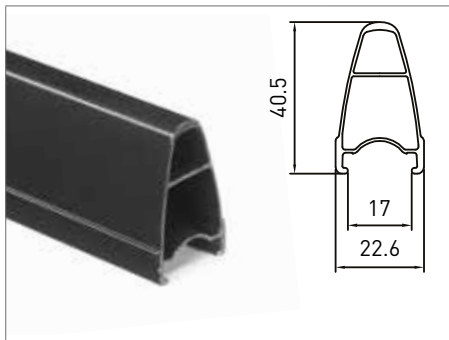
Copertoncino / Clincher  
 Misure - Etrto mm / Size - Etrto mm: 28" - 622 - Din 19  
 ERD mm 28": 564  
 Altezz./Height: 40  
 Larghezza / Width: 26.5  
 Materiale / Material:  
 100% Fibra Carbonio per alta temperatura / 100% high temperature  
 Carbon Fiber  
 Forature / Holes: 24  
 Peso / Weight: 455gr



### GRX35 TUBELESS READY DISC

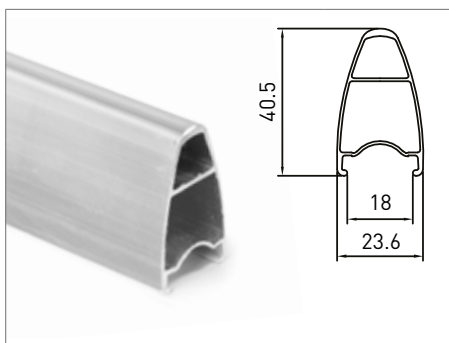
Copertoncino / Clincher  
 Misure - Etrto mm / Size - Etrto mm: 28" - 622 - Din 22  
 ERD mm 28": 590  
 Altezz. / Height: 35  
 Larghezza / Width: 29  
 Materiale / Material:  
 100% Fibra Carbonio / 100% Carbon Fiber  
 Forature / Holes: 24  
 Peso / Weight: 360gr

## ALLUMINIO SALDATO / WELDED ALUMINUM



### 716 - RIM BRAKE SALDATO/WELDED

Copertoncino / Clincher - Tubeless Ready  
 Misure - Etrto mm / Size - Etrto mm: 28" - 622 - Din 17  
 ERD mm 28": 556  
 Altezz./Height: 40,5  
 Larghezza / Width: 24  
 Materiale / Material: Alum. 6082  
 Forature / Holes: 20, 24, 32  
 Peso / Weight: 620gr



### 716 DISC - SALDATO/WELDED

Copertoncino / Clincher - Tubeless Ready  
 Misure - Etrto mm / Size - Etrto mm: 28" - 622 - Din 18  
 ERD mm 28": 556  
 Altezz. / Height: 40,5  
 Larghezza / Width: 24  
 Materiale / Material: Alum. 6082  
 Forature / Holes: 24.  
 Peso / Weight: 595gr

# CERCHI / RIMS

## ALLUMINIO SALDATO / WELDED ALUMINUM

	<h3>1.55 RIM BRAKE SALDATO/WELDED</h3> <p>Copertoncino / Clincher          Misure - Etrto mm / Size - Etrto mm: 28" - 622 - Din 18          ERD mm 28": 580          Altezza / Height: 30          Larghezza / Width: 20          Materiale / Material: Alum. 6082          Forature / Holes: 20, 24          Peso / Weight: 465gr</p>
---	--

	<h3>1.55 DISC - SALDATO/WELDED</h3> <p>Copertoncino / Clincher - Tubeless Ready          Misure - Etrto mm / Size - Etrto mm: 28" - 622 - Din 19          ERD mm 28": 580          Altezza / Height: 30          Larghezza / Width: 24          Materiale / Material: Alum. 6082          Forature / Holes: 20, 24          Peso / Weight: 455gr</p>
---	--

	<h3>NISI SLUDY 390 RIM BRAKE</h3> <p>Copertoncino / Clincher          Misure - Etrto mm / Size - Etrto mm: 28" - 622 - Din 14          ERD mm 28": 609          Altezza / Height: 14          Larghezza / Width: 20          Materiale / Material: Alum. 6082          Forature / Holes: 32, 36          Peso / Weight: 390gr</p>
---	---

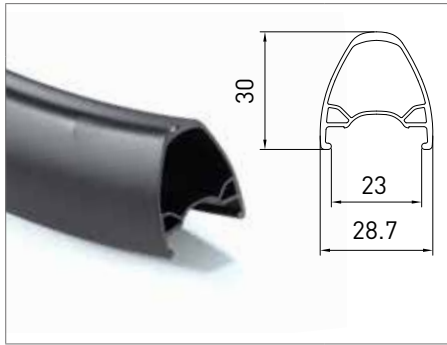


## NISI SLUDY 390 RIM BRAKE

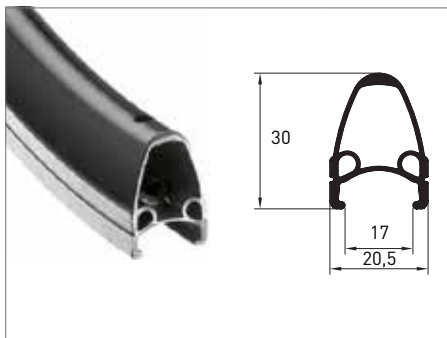


## CERCHI / RIMS

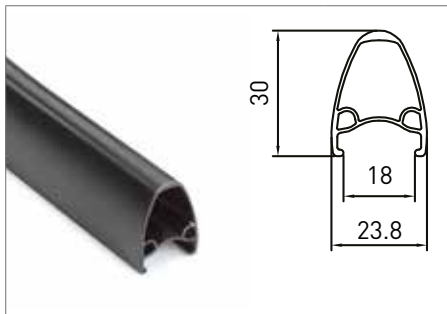
## ALLUMINIO SPINATO / PIN ALUMINUM

**825 GRAVEL DISC**

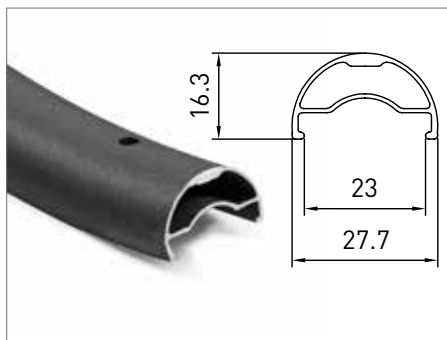
Copertoncino / Clincher - Tubeless Ready  
 Misure - Etrto mm / Size - Etrto mm: 28" - 622 - Din 23  
 ERD mm 28": 577  
 Altezza / Height: 30  
 Larghezza / Width: 28,7  
 Materiale / Material: Alum. 6060  
 Forature / Holes: 24, 32, 36  
 Peso / Weight: 719gr

**Ø30C RIM BRAKE**

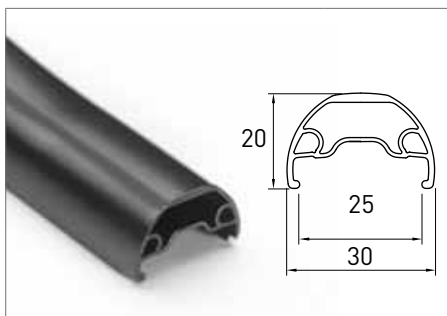
Copertoncino / Clincher  
 Misure - Etrto mm / Size - Etrto mm: 28" - 622 - Din 17  
 ERD mm 28": 577  
 Altezza / Height: 30  
 Larghezza / Width: 21  
 Materiale / Material: Alum. 6060 / 6005  
 Forature / Holes: 32,36  
 Peso / Weight: 655gr

**Ø30 DISC**

Copertoncino / Clincher  
 Misure - Etrto mm / Size - Etrto mm: 28" - 622 - Din 18  
 ERD mm 28": 577  
 Altezza / Height: 30  
 Larghezza / Width: 23  
 Materiale / Material: Alum. 6060 / 6005  
 Forature / Holes: 32,36  
 Peso / Weight: 635gr

**GRAVEL X DISC  
SALDATO/WELDED**

Copertoncino / Clincher - Tubeless Ready  
 Misure - Etrto mm / Size - Etrto mm: 28" - 622 - Din 23 mm  
 Altezza / Height: 16,34  
 Larghezza / Width: 27,87mm  
 Materiale / Material: Alum. 6082  
 Forature / Holes: 24  
 Peso / Weight: 425gr

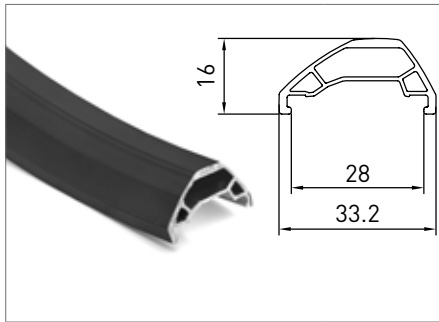
**N25 DISC**

Copertoncino / Clincher - Tubeless Ready  
 Misure - Etrto mm / Size - Etrto mm: 29" / 28" - 622 / 27,5" - 584 / 24"  
 507 / 20" - 406 / 16" - 305 - Din 25  
 ERD mm 29" 28" 27,5": 592/554  
 Altezza / Height: 20  
 Larghezza / Width: 30  
 Materiale / Material: Alum. 6005T6  
 Forature / Holes: 32,36  
 Peso / Weight: 28" 585gr

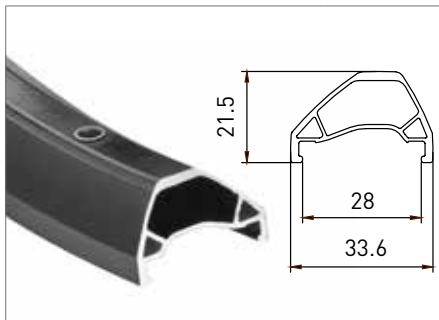


## CERCHI / RIMS

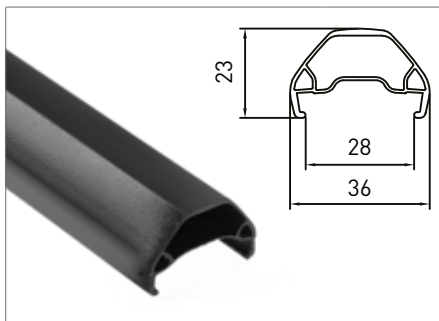
## ALLUMINIO SPINATO / PIN ALUMINUM

**816 TRAIL**

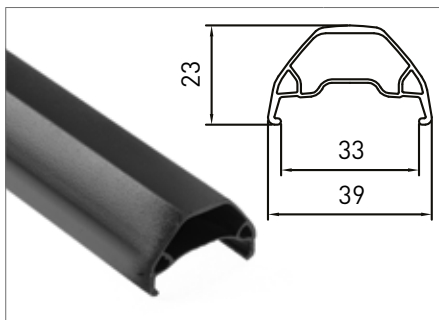
Copertoncino / Clincher - Tubeless Ready  
 Misure - Etrto mm / Size - Etrto mm: 29" - 622 - Din 28 mm  
 Altezz. / Height: 16,5  
 Larghezza / Width: 34  
 Materiale / Material: Alum. 6005 T6  
 Forature / Holes: 32,36  
 Peso / Weight: 29" 570gr

**819 DISC**

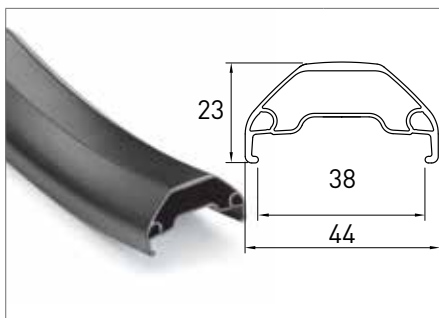
Copertoncino / Clincher - Tubeless Ready  
 Misure - Etrto mm / Size - Etrto mm: 29" - 622 / 27,5"-584 - Din 28  
 ERD mm 29"28" 27,5"16": 592/554  
 Altezz. / Height: 21,5  
 Larghezza / Width: 33,6  
 Materiale / Material: Alum. 6005T6  
 Forature / Holes: 32,36  
 Peso / Weight: 598gr

**N28 DISC**

Copertoncino / Clincher - Tubeless Ready  
 Misure - Etrto mm / Size - Etrto mm: 29"28"- 622 / 27,5"- 584 /20" - 406 - Din 28  
 ERD mm 29"28" 27,5": 592/554  
 Altezz. / Height: 23  
 Larghezza / Width: 36  
 Materiale / Material: Alum. 6005 T6  
 Forature / Holes: 32,36  
 Peso / Weight: 27,5" 565 / 29" 635gr

**N33 DISC**

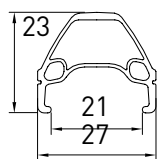
Copertoncino / Clincher  
 Misure - Etrto mm/ Size - Etrto mm: 29"28"-622 / 27,5"-584 - Din 33  
 ERD mm 29"28" 27,5": 592/554  
 Altezz. / Height: 23  
 Larghezza / Width: 39  
 Materiale / Material: Alum. 6005 T6  
 Forature / Holes: 32,36  
 Peso / Weight: 27,5" 565 / 29" 635gr 3

**N38PLUS DISC**

Copertoncino / Clincher - Tubeless Ready  
 Misure - Etrto mm/ Size - Etrto mm:  
 29"28"- 622 / 27,5"- 584 /20" - 406 - Din 38  
 ERD mm 29"28" 27,5": 592/554  
 Altezz. / Height: 23  
 Larghezza / Width: 44  
 Materiale / Material: Alum. 6005T6  
 Forature / Holes: 32,36  
 Peso / Weight: 27,5" 710 / 29" 750gr

# CERCHI / RIMS

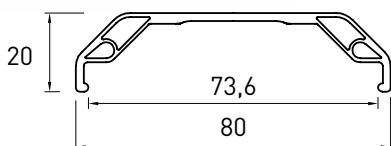
## ALLUMINIO SPINATO / PIN ALUMINUM



### NEPAL V-BRAKE

Copertoncino / Clincher  
 Misure - Etrto mm / Size - Etrto mm:  
 29"28"-622 / 27,5"-584 / 26"-559 / 24"-507 / 20"-406 - Din 21  
 ERD mm 29"28" 27,5": 592/554  
 Altezz. / Height: 23  
 Larghezza / Width: 27  
 Materiale / Material: Alum. 6063T6  
 Forature / Holes: 32,36  
 Peso / Weight: 27,5" 595 / 29" 530gr

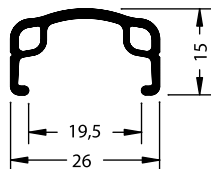
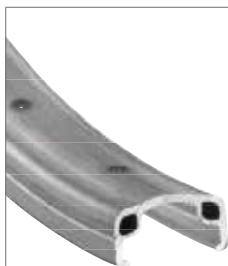
## FAT



### MAGNUS FAT DISC

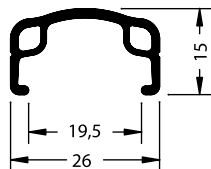
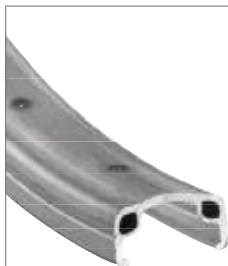
Copertoncino / Clincher  
 Misure - Etrto mm / Size - Etrto mm:  
 26"-559 / 24"-507 / 20"-406 - Din 74  
 ERD mm 26" 24" 20": 530/483/385  
 Altezz. / Height: 20  
 Larghezza / Width: 80  
 Materiale / Material: Alum. 6063  
 Forature / Holes: 32,36  
 Peso / Weight: 26" 1000gr

## ENTRY LEVEL



### MIRAGE

Copertoncino / Clincher  
 Misure - Etrto mm / Size - Etrto mm:  
 26"- 559 / 24"- 507 / 20"- 406 / 16" - 305 - Din 20  
 Altezz./Height: 15  
 Larghezza / Width: 26  
 Materiale / Material: Alum. 6060  
 Forature / Holes: 36 - 28 (20") - 20"(16")  
 Peso / Weight: -



### MIRAGE 28"

Copertoncino / Clincher  
 Misure - Etrto mm / Size - Etrto mm:  
 29" 28"- 622 / 27,5"- 584 / 26"1 3:8 - 590 - Din 20  
 Altezz./Height: 15  
 Larghezza / Width: 26  
 Materiale / Material: Alum. 6060  
 Forature / Holes: 36  
 Peso / Weight: -

# MOZZI PISTA E SCATTO FISSO / TRACK AND SINGLE SPEED



**Ant GMPPISTA**



**Post GMPPISTAPP**



**Ant GMSFA**



**Post GMSF32PFW**

MODELLO MODEL	TIPO TYPE	CONNESSIONE RAGGI CONNECTION SPOKES	TIPO FRENO BRAKE SYSTEM	HOLES	OLD	NR. OF SPEED	AXEL	PESO WEIGHT
GMPPISTA	Anteriore Front	Testa curva J Bend	-	20	100	-	Alluminio con dadi Alloy with nut	242gr
GMPPISTAPP	Posteriore Rear	Testa curva J Bend	-	20	120	1+1 pignone 1+1 pignon	Alluminio con dadi Alloy with nut	323gr
GMSFA	Anteriore Front	Testa curva J Bend	-	32	100	-	-	312gr
GMSF32PFW	Posteriore Rear	Testa curva J Bend	-	32	120	1 pignone +1 ruota-libera 1v. 1 pignon + 1 freewheels	-	398gr

**Tutti i modelli di mozzi sulle nostre pag. web. /All model of hubs in our website.**







# INDICE / INDEX

<b>GRAVEL GRX35 CARBON TUBELESS READY</b>	<b>4</b>	<b>PISTA H40 TUBELESS</b>	<b>20</b>	<b>T1-30S</b>	<b>31</b>
GRAVEL / CYCLOCROSS		PISTA - TRACK			
<b>GPM H40 DISC CARBON TUBELESS READY</b>	<b>5</b>	<b>PISTA K28</b>	<b>21</b>	<b>T1-30S DISC</b>	<b>32</b>
ROAD / CHRONO / CYCLOCROSS / TRIATHLON		PISTA - TRACK			
<b>GPM H40 CARBON TUBELESS READY RIM BRAKE</b>	<b>6</b>	<b>PISTA A40 RIM BRAKE</b>	<b>22</b>	<b>EQUIPE ROCCIA 26" - 27,5" - 28" - 29"</b>	<b>33</b>
ROAD / CHRONO / CYCLOCROSS / TRIATHLON		ROAD / TRACK			
<b>TECNO 1.55 DISC</b>	<b>7</b>	<b>PISTA FIXED RIM BRAKE</b>	<b>23</b>	<b>T1-24L 28" - 29" RIM BRAKE</b>	<b>34</b>
ROAD / CHRONO / CYCLOCROSS / TRIATHLON / GPM / GRAVEL		ROAD / TRACK			
<b>TECNO 1.55 HARD ANODIZE RIM BRAKE</b>	<b>8</b>	<b>819 29" TUBELESS READY</b>	<b>24</b>	<b>MIRAGE 16" - 20" - 24" - 26" - 26"1/8</b>	<b>35</b>
ROAD / CHRONO / CYCLOCROSS / TRIATHLON / GPM / GRAVEL		XC / XM / MARATHON / X-TERRA / XTRAIL / ENDURO / EBIKE			
<b>GRAVEL X</b>	<b>9</b>	<b>819 MULET 27" 29" TUBELESS READY</b>	<b>25</b>	<b>CERCHI / RIMS</b>	<b>36</b>
GRAVEL / E-BIKE / CYCLOCROSS		XTRAIL / ENDURO / EBIKE / FREESTYLE / DH			
<b>TECNO 716 DISC TUBELESS READY</b>	<b>10</b>	<b>N33 PLUS 27,5" TUBELESS READY</b>	<b>26</b>	<b>MOZZI / HUBS</b>	<b>41</b>
ROAD / CHRONO / TRIATHLON		XTRAIL / ENDURO / EBIKE / FREESTYLE / DH			
<b>TECNO 716 HARD ANODIZE RIM BRAKE TUBELESS READY</b>	<b>11</b>	<b>N28 29" TUBELESS READY</b>	<b>27</b>		
ROAD / CHRONO / TRIATHLON		XTRAIL / ENDURO / EBIKE / FREESTYLE / DH			
<b>EQUIPE 716 DISC TUBELESS READY</b>	<b>12</b>	<b>N25 SLE DISC BOOST 27,5" - 29" TUBELESS READY</b>	<b>28</b>		
ROAD / CHRONO / TRIATHLON		XC / XM / MARATHON / X-TERRA / XTRAIL / ENDURO / EBIKE FREESTYLE / DH / GRAVEL			
<b>EQUIPE 716 RIM BRAKE TUBELESS READY</b>	<b>13</b>	<b>FAT MAGNUS 80 26"</b>	<b>29</b>		
ROAD / CHRONO / TRIATHLON		XC / XM / MARATHON / TRAIL			
<b>GRAVEL 825 DISC TUBELESS READY</b>	<b>14</b>	<b>FAT MAGNUS 80 20"</b>	<b>30</b>		
ROAD / GRAVEL		E-BIKE / S-PEDELEC			
<b>GRAVEL 825 EQUIPE DISC TUBELESS READY</b>	<b>15</b>				
ROAD / GRAVEL					
<b>SHADOW DISC TUBELESS READY</b>	<b>16</b>				
ROAD / TRIATHLON / CYCLOCROSS / GPM / GRAVEL					
<b>TECNO 024 RIM BRAKE</b>	<b>17</b>				
ROAD					
<b>TECNO 324 RIM BRAKE</b>	<b>18</b>				
ROAD					



**CNC 3D holes:** I cerchi sono forati con macchine cnc a 5 assi per dare la direzione al foro.  
The rims are drilled by 5 axes cnc to give a direction to the hole.



**Trattamento termico / Heat treatment:** I cerchi prodotti con le leghe di alluminio 6082 e 6005 subiscono il trattamento termico alla fine di tutte le lavorazioni. All the rims made with alloy 6082 and 6005 undergo heat treatment after all the processing.



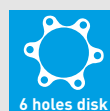
**Disc Centerlock**



**Trattamento di anodizzazione / Anodize process:** Il cerchio viene anodizzato dopo le lavorazioni meccaniche.  
Anodize process after the Mechanical process.



**Trattamento di anodizzazione dura / Hard Anodize process:** Il cerchio viene anodizzato duro dopo le lavorazioni meccaniche con una penetrazione di 50 micron.  
Hard Anodize process after the Mechanical process with penetration of 50 micron..



**Disco 6 fori  
6 holes disk**



**GIPIEMME SRL**

Via Rossano, 3 · 35013 Cittadella (PD) · Italy  
T. +39 049 8258022 · [www.gipiemme.com](http://www.gipiemme.com)

